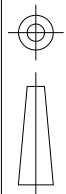


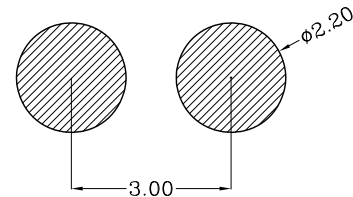
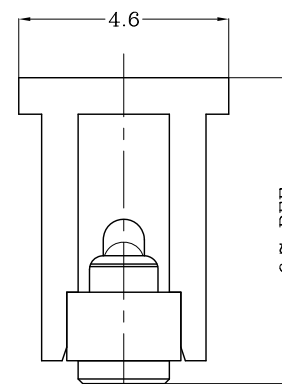
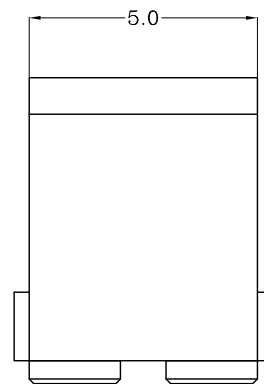
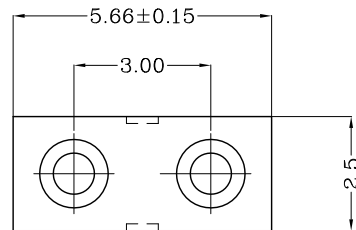
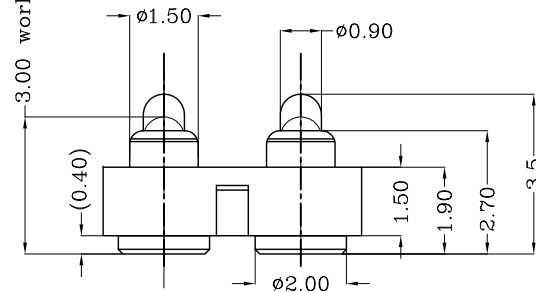
THIS INFORMATION IS CONFIDENTIAL AND IS DISCLOSED TO YOU ON CONDITION THAT NO FURTHER DISCLOSURE IS MADE BY YOU TO OTHER THAN TOP-LINK PERSONNEL WITHOUT WRITTEN AUTHORIZATION FROM TOP-LINK LTD.



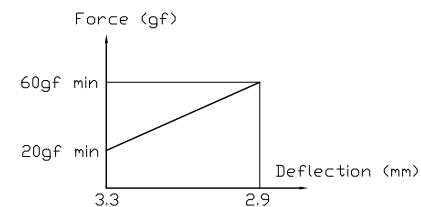
DWG NO.
C-100386

LDC	-
DIST	-

3.00 working height



Recommended PCB Layout



- Notes:
- Material, Housing: PA 4.6 (30% Glass Filled)
Color Black.
Contact: Brass
 - Mechanical demands:
Plating Plunger: 0.4Um Au over 1.4um Ni
Plating Body: 0.1Um Au over 1.4um Ni.

USED ON

100386-2

PART NUMBER

DIMENSIONS IN MM
TOLERANCES UNLESS
OTHER SPECIFIED
0 = ±-
0.0 = ±0.15
0.00 = ±0.10
0.000 = ±
ANGLE: ±1°
SURF TEXTURE: 3.2/
REMOVE BURRS. BREAK
SHARP EDGES R0.05 MAX
DO NOT SCALE PRINT

MATL		<div>1</div>		HT TR		—		FIN		— <div>✓</div>													
DWN		Qin		APVD		Lansing		<div>Top-Link</div> <div>Electronics</div>		Top-Link Electronics Ltd.													
CHK		Jim		REL																			
NAME												BATTERY POGO CONNECTOR 2 POSITIONS											
												PGC-1.5-3.5-R-2P-3.0PH											
SCALE		1:1		A4		DWG NO.		C-100386		SHEET		1 OF 1		REV		A							

	NEW		2008/08/26
LTR	REVISION RECORD	APVD	DATE

4

3

2

1

A

B

C

D