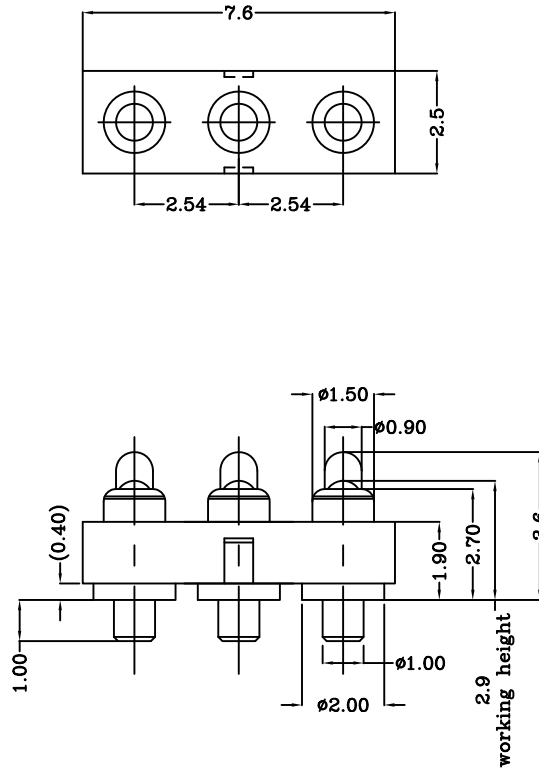


THIS INFORMATION IS CONFIDENTIAL AND IS DISCLOSED TO YOU ON CONDITION THAT NO FURTHER DISCLOSURE IS MADE BY YOU TO OTHER THAN TOP-LINK PERSONNEL WITHOUT WRITTEN AUTHORIZATION FROM TOP-LINK LTD.

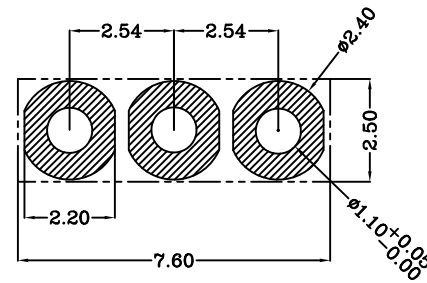
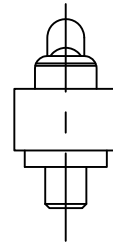
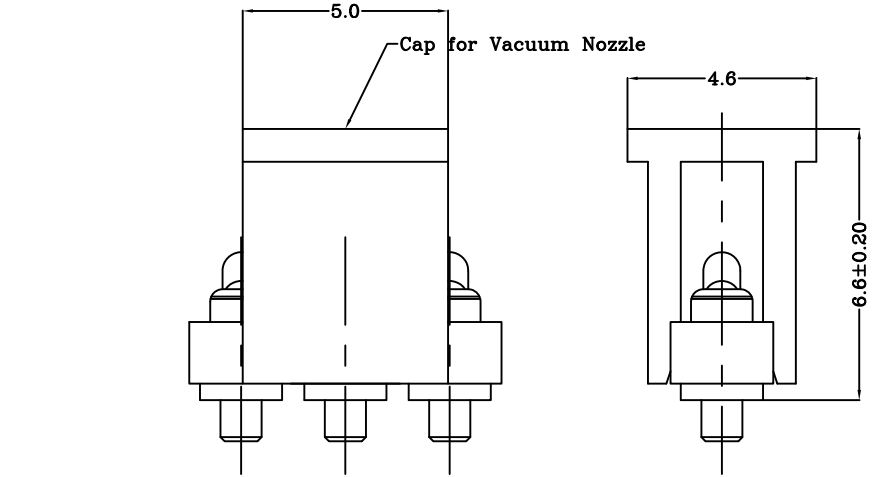
DWG NO.
C-100169



| | |
|------|---|
| LOC | - |
| DIST | - |



- Notes:
 1 Material, Housing: PA 4.6 (30% Glass Filled)
 Color Black.
 Contact: Brass
 2 Mechanical demands:
 Plating Plunger: 0.4um Au over 1.4um Ni
 Plating Body: 0.1um Au over 1.4um Ni.



Recommended PCB Layout

USED ON
-

| |
|-------------|
| 100169-3 |
| PART NUMBER |

| | | | | | | | |
|--|---------|---|-------|---------|---------|---|--------------|
| DIMENSIONS IN MM TOLERANCES UNLESS OTHER SPECIFIED | | MATL \triangle 1 | | HT TR - | | FIN - \checkmark | |
| 0 | = ±- | DWN | Benny | APVD | Lansing | <i>top-link</i> Top-Link Electronics Ltd. | |
| 0.0 | = ±0.15 | CHK | Andy | REL | | <i>Electronics</i> | |
| 0.00 | = ±0.10 | NAME BATTERY POGO CONNECTOR 3 POSITIONS | | | | | |
| 0.000 | = ± | PGC-1.5-3.6-R-3P-2.54PH | | | | | |
| ANGLE: ±1° | | SCALE | 1:1 | A4 | DWG NO. | c-100169 | SHEET 1 OF 1 |
| SURF TEXTURE: ∇ 3.2 | | | | | | | REV A |
| REMOVE BURRS. BREAK SHARP EDGES R0.05 MAX DO NOT SCALE PRINT | | | | | | | |

| | | | |
|-----|-----------------|------|------------|
| | NEW | | 2007/09/10 |
| LTR | REVISION RECORD | APVD | DATE |

4

3

2

1