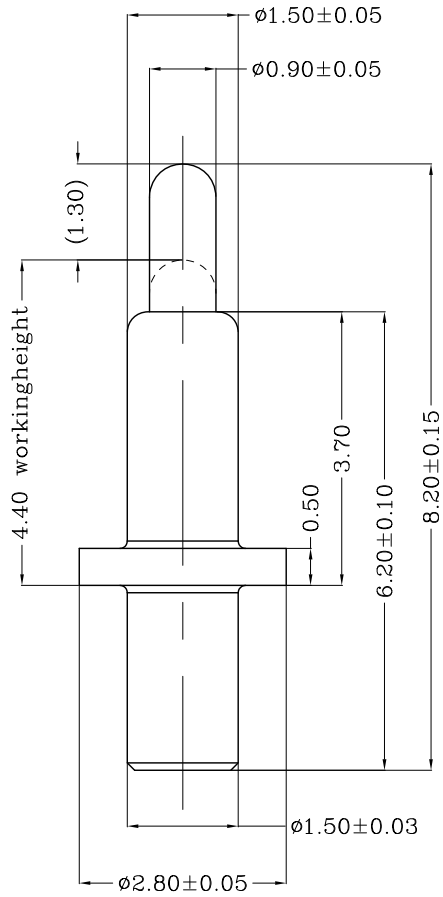


THIS INFORMATION IS CONFIDENTIAL AND IS DISCLOSED TO YOU ON CONDITION THAT NO FURTHER DISCLOSURE IS MADE BY YOU TO OTHER THAN TOP-LINK PERSONNEL WITHOUT WRITTEN AUTHORIZATION FROM TOP-LINK LTD.

DWG NO. C-101409



USED ON -



Notes:

- 1) Material(材质):
 - 1) Body : Brass
 - 2) Plunge : Brass
 - 3) Spring : Stainless steel wire
- 2) Plating(电镀):
 - 1) Body: 0.1um Gold plating over 1.4 Nickel plating (Body: 镀金0.1um 镍底1.4um)
 - 2) Plunger: Min 0.4um Gold plating over 1.4um Nickel plating (Plunger: 镀金0.4um 镍底1.4um)
- 3) Mechanical(机械性能):
 - 1) Force: 110±25gf per pin at 1.3mm stroke (力: 下压1.3mm的力: 110±25gf)
 - 2) Total stroke(总行程) : 2.00mm
 - 3) Durability(寿命): 10,000 cycle min.
- 4) Electrical(电性能)
 - 1) Contact resistance(接触抵抗): 30mOhm Max.
 - 2) Voltage rating(额定电压): 36V DC Max
 - 3) Current rating(额定电流): 2.0A

LDC	-
DIST	-

	修改电镀规格		2010/07/02
	NEW		2009/12/10
LTR	REVISION RECORD	APVD	DATE

DIMENSIONS IN MM
TOLERANCES UNLESS
OTHER SPECIFIED
0 = ±-
0.0 = ±0.10
0.00 = ±0.05
0.000 = ±
ANGLE: ±1°
SURF TEXTURE: 3.2/
REMOVE BURRS. BREAK
SHARP EDGES R0.05 MAX
DO NOT SCALE PRINT

MATL		HT TR -	FIN -	
DWN	Qin	APVD	Top-Link Electronics Ltd.	
CHK	REL	NAME POGO PIN PG-1.5-2.5-2.8-0.5-1.5-6.2-8.2		
SCALE 1:1	A4	DWG NO. C-101409	SHEET 1 OF 1	REV 2

101409-1
PART NUMBER

4

3

2

1

D

C

B

A