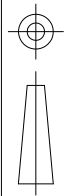
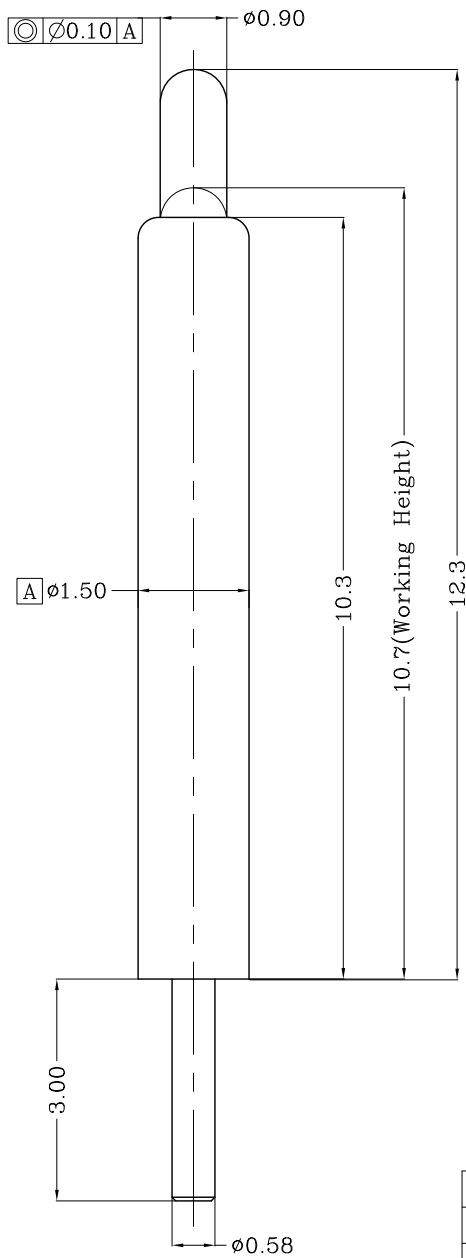


THIS INFORMATION IS CONFIDENTIAL AND IS DISCLOSED TO YOU ON CONDITION THAT NO FURTHER DISCLOSURE IS MADE BY YOU TO OTHER THAN TOP-LINK PERSONNEL WITHOUT WRITTEN AUTHORIZATION FROM TOP-LINK LTD.

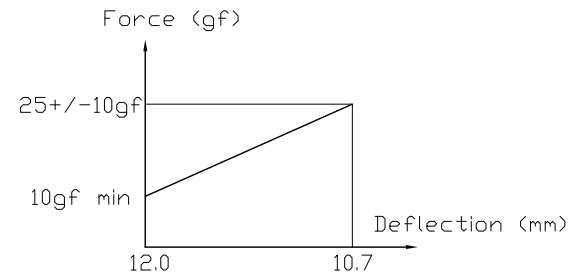
DWG NO. C-101189



USED ON -



- Notes:
- △ Material:
 - 1)Body : C36000
 - 2)Plunger: C36000 or C27000
 - 3)Spring : Stainless steel wire
 - 2 Plating
 - 1)Body: 0.25um Gold plating over 1.4um Nickel plating
 - 2)Plunger: 0.4um Gold plating over 1.4um Nickel plating



101189-1
PART NUMBER

DIMENSIONS IN MM TOLERANCES UNLESS OTHER SPECIFIED		MATL	△ 1	HT TR	-	FIN	- ✓
0	= ±-	DWN	Qin	APVD		top-Link Top-Link Electronics Ltd.	
0.0	= ±0.15	CHK		REL			
0.00	= ±0.10	NAME POGO PIN PG-058-3.0-1.5-10.3-12.3					
0.000	= ±	SCALE	1:1	A4	DWG NO.	C-101189	SHEET 1 OF 1
ANGLE: ±1°							REV C
SURF TEXTURE: 3.2/▽		DO NOT SCALE PRINT					

update force	2011/05/10		
LTR	REVISION RECORD	APVD	DATE

LOC	-
DIST	-

4

3

2

1

D

C

B

A