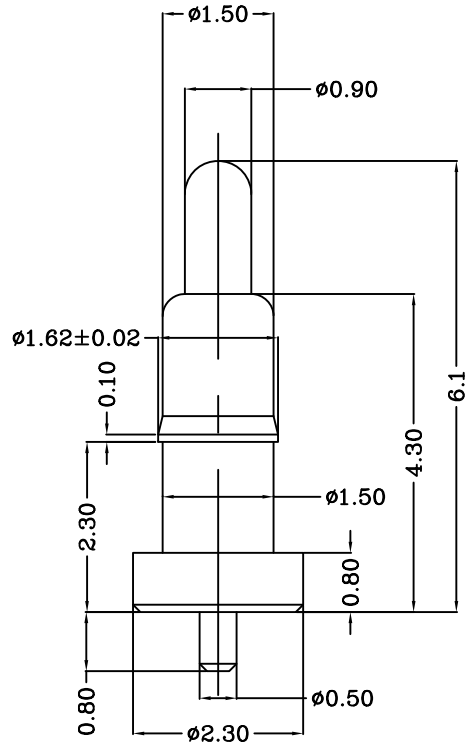


THIS INFORMATION IS CONFIDENTIAL AND IS DISCLOSED TO YOU ON CONDITION THAT NO FURTHER DISCLOSURE IS MADE BY YOU TO OTHER THAN TOP-LINK PERSONNEL WITHOUT WRITTEN AUTHORIZATION FROM TOP-LINK LTD.

DWG NO.
C-101099



USED ON
-



Notes:

- △ Material(材质):
 - 1)Body :Brass
 - 2)Plunge :Brass
 - 3)Spring :Stainless steel wire
- 2 Plating(电镀):
 - 1)Body: Min 0.1um Gold plating over min. 1.4um Nickel plating (Body: 镀金0.1um Min 镍底1.4um Min)
 - 2)Plunger: Min 0.4um Gold plating over min. 1.4um Nickel plating (Plunger: 镀金0.4um Min 镍底1.4um Min)
- 3 Mechanical(机械性能):
 - 1)Force:90gf min per pin at 1.2mm stroke (力:下压1.2mm的力:90gf min)
 - 2)Total stroke(总行程): 1.50mm
 - 3)Durability(寿命): 10,000 cycle min.
- 4 Electrical(电性能):
 - 1>Contact resistance(接触阻抗): 30mOhm Max.
 - 2)Voltage rating(额定电压): 36V DC Max
 - 3)Current rating(额定电流): 2.0A

LDC	-
DIST	-

	update TH		2010/09/16
LTR	REVISION RECORD	APVD	DATE

DIMENSIONS IN MM
TOLERANCES UNLESS
OTHER SPECIFIED
0 = ±-
0.0 = ±0.15
0.00 = ±0.10
0.000 = ±
ANGLE: ±1°
SURF TEXTURE: 3.2/
REMOVE BURRS. BREAK
SHARP EDGES R0.05 MAX
DO NOT SCALE PRINT

MATL		△ 1	HT TR		-	FIN		-	✓
DWN	Qin	APVD	NAME		POGO PIN				
CHK	REL	SCALE		DWG NO.		SHEET		REV	
		1:1	A4	C-101099	1 OF 1	C1			

top-Link Top-Link Electronics Ltd.

101099-1
PART NUMBER