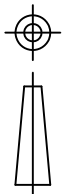
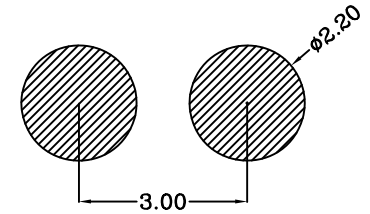
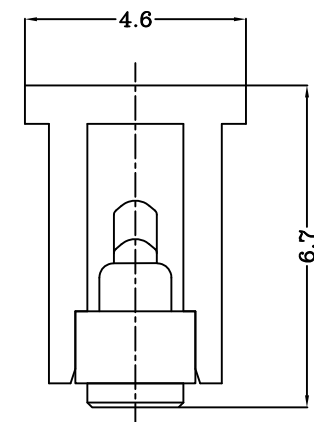
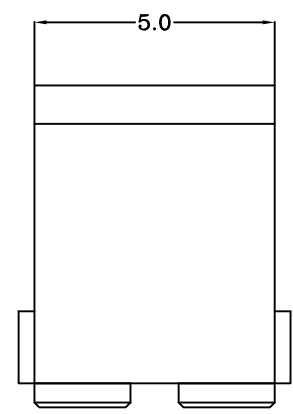
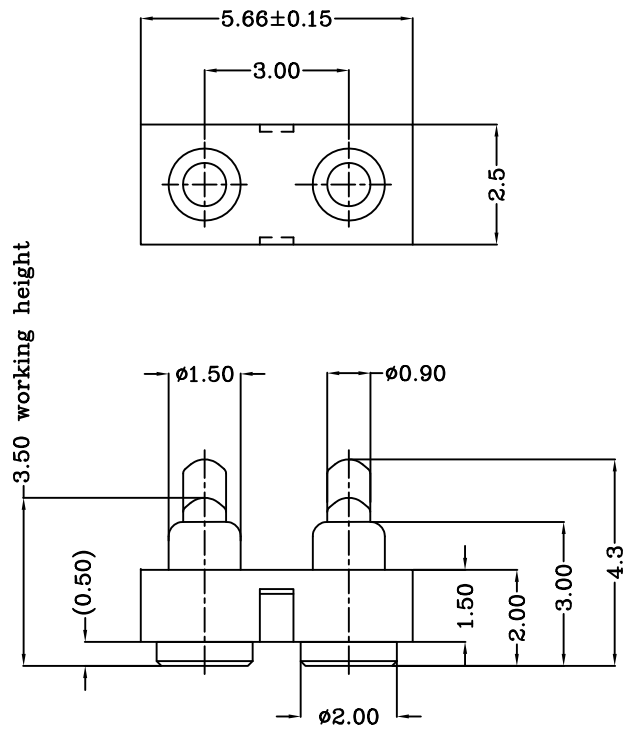


THIS INFORMATION IS CONFIDENTIAL AND IS DISCLOSED TO YOU ON CONDITION THAT NO FURTHER DISCLOSURE IS MADE BY YOU TO OTHER THAN TOP-LINK PERSONNEL WITHOUT WRITTEN AUTHORIZATION FROM TOP-LINK LTD.

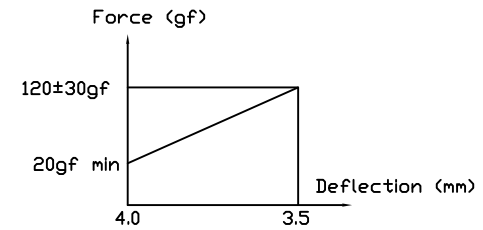
DWG NO. C-100273



USED ON -



Recommended PCB Layout



- Notes:
 1 Material, Housing: PA 4.6 (30% Glass Filled)
 Color Black.
 Contact: Brass
 2 Mechanical demands:
 Plating Plunger: 0.4um Au over 1.4um Ni
 Plating Body: 0.1um Au over 1.4um Ni.

100273-2
 PART NUMBER

DIMENSIONS IN MM TOLERANCES UNLESS OTHER SPECIFIED		MATL	HT TR	FIN
0 = ±-		1	-	- ✓
0.0 = ±0.15		DWN	APVD	
0.00 = ±0.10		Benny	Lansing	
0.000 = ±		CHK	REL	Top-Link Top-Link Electronics Electronics Ltd.
ANGLE: ±1°		Andy		
NAME BATTERY POGO CONNECTOR 2 POSITIONS				
PGC-1.5-4.3-R-2P-3.0PH				
SCALE	A4	DWG NO.	SHEET	REV
1:1		C-100273	1 OF 1	A

	NEW		2008/01/05
LTR	REVISION RECORD	APVD	DATE

LOC	-
DIST	-