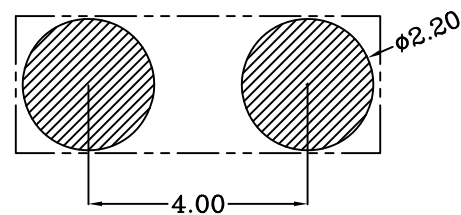
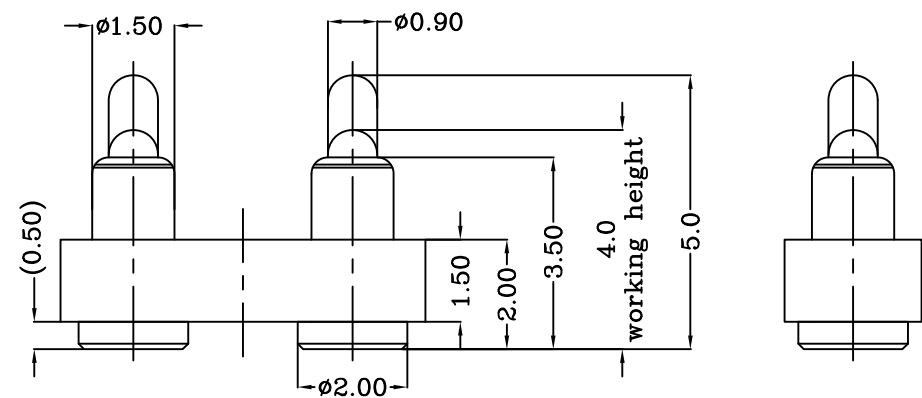
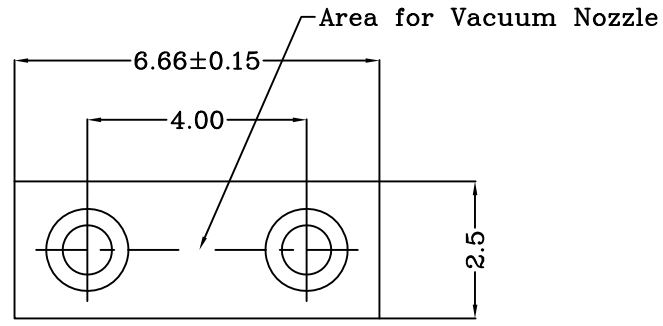


THIS INFORMATION IS CONFIDENTIAL AND IS DISCLOSED TO YOU ON CONDITION THAT NO FURTHER DISCLOSURE IS MADE BY YOU TO OTHER THAN TOP-LINK PERSONNEL WITHOUT WRITTEN AUTHORIZATION FROM TOP-LINK LTD.

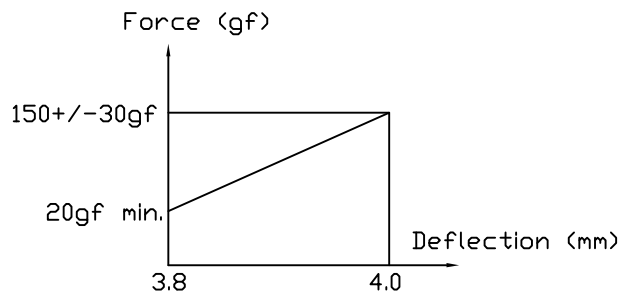
DWG NO.  
C-100219



USED ON  
-



Recommended solder patse thickness is 0.10 mm  
Recommended PCB Layout



- Notes:  
 1 Material, Housing: PA 4.6 (30% Glass Filled)  
     Color Black.  
     Contact: Brass  
 2 Mechanical demands:  
     Plating Plunger: 0.4um Au over 1.4um Ni  
     Plating Body: 0.1um Au over 1.4um Ni.

LOC	-
DIST	-

update remark	2007/12/26		
LTR	REVISION RECORD	APVD	DATE

DIMENSIONS IN MM  
 TOLERANCES UNLESS  
 OTHER SPECIFIED  
 0 = ±-  
 0.0 = ±0.15  
 0.00 = ±0.10  
 0.000 = ±  
 ANGLE: ±1°  
 SURF TEXTURE: 3.2/  
 REMOVE BURRS. BREAK  
 SHARP EDGES R0.05 MAX  
 DO NOT SCALE PRINT

MATL		HT TR	-	FIN	-
DWN	Benny	APVD	Lansing	Top-Link Electronics Ltd.	
CHK	Andy	REL			
NAME BATTERY POGO CONNECTOR 2 POSITIONS PGC-1.5-5.0-R-2P-4.0PH					
SCALE	1:1	A4	DWG NO.	C-100219	SHEET 1 OF 1
					REV C

100219-2
PART NUMBER