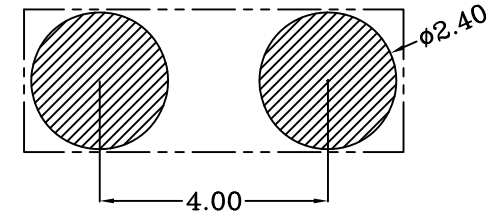
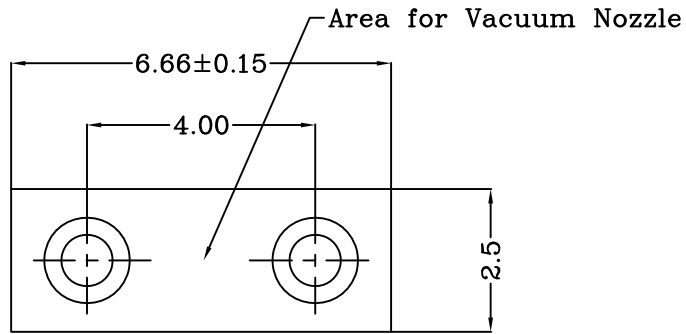


THIS INFORMATION IS CONFIDENTIAL AND IS DISCLOSED TO YOU ON CONDITION THAT NO FURTHER DISCLOSURE IS MADE BY YOU TO OTHER THAN TOP-LINK PERSONNEL WITHOUT WRITTEN AUTHORIZATION FROM TOP-LINK LTD.

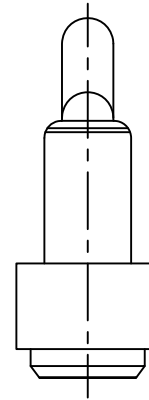
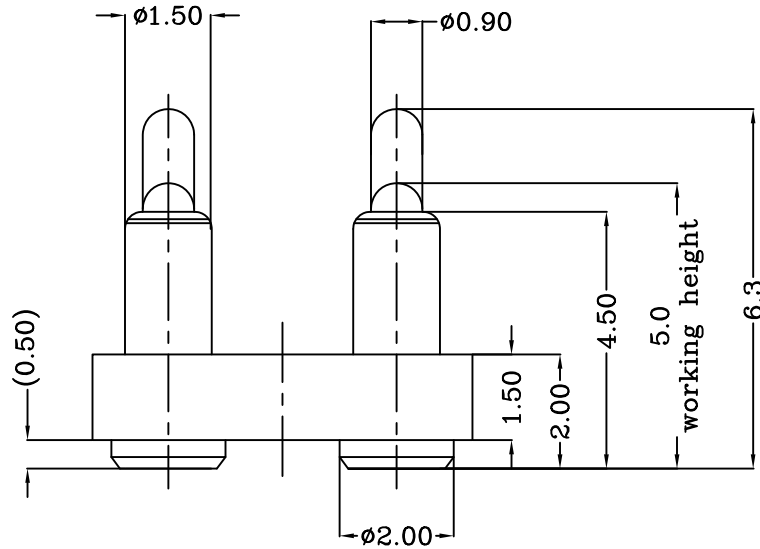
DWG NO.
C-100203



USED ON
-



Recommended PCB Layout



Notes:

- 1 Material, Housing: PA 4.6 (30% Glass Filled)
Color Black.
Contact: Brass
- 2 Mechanical demands:
Plating Plunger: Min. 0.4um Au over 1.25um Ni
Plating Body: Min. 0.1um Au over 1.25um Ni.
- 3 Mechanica
 - 1)Force: 90gf min per pin at 1.3mm stroke
 - 2)Total stroke : 1.60mm
 - 3)Durability: 10,000 cycle min.

100203-2

PART NUMBER

DIMENSIONS IN MM TOLERANCES UNLESS OTHER SPECIFIED		MATL	HT TR	FIN
0 = ±-		1	-	- ✓
0.0 = ±0.15		DWN	APVD	
0.00 = ±0.10		Benny	Lansing	<i>Top-Link</i> Top-Link <i>Electronics</i> Electronics Ltd.
0.000 = ±		CHK	REL	
ANGLE: ±1°		Andy		
SURF TEXTURE: 3.2/√		NAME BATTERY POGO CONNECTOR 2 POSITIONS PGC-1.5-6.3-R-2P-4.0PH		
REMOVE BURRS. BREAK SHARP EDGES R0.05 MAX DO NOT SCALE PRINT		SCALE	A4	DWG NO. C-100203
		1:1		SHEET 1 OF 1
				REV B

LDC	-
DIST	-

LTR	取消倒角	APVD	2007/12/04
	REVISION RECORD		DATE

4

3

2

1