

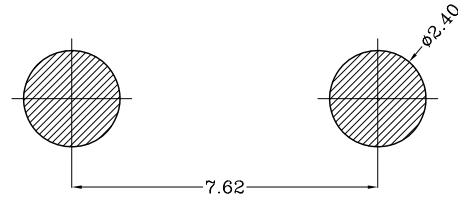
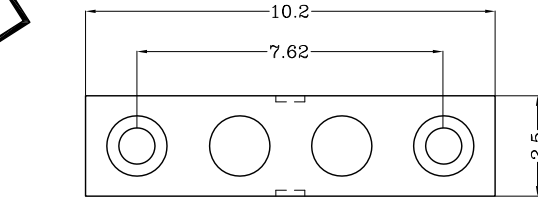
THIS INFORMATION IS CONFIDENTIAL AND IS DISCLOSED TO YOU ON CONDITION THAT NO FURTHER DISCLOSURE IS MADE BY YOU TO OTHER THAN TOP-LINK PERSONNEL WITHOUT WRITTEN AUTHORIZATION FROM TOP-LINK LTD.



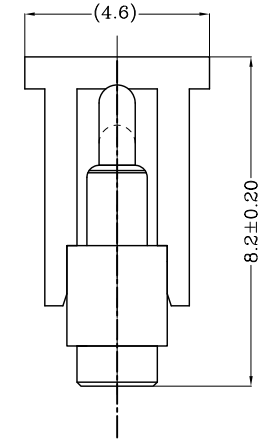
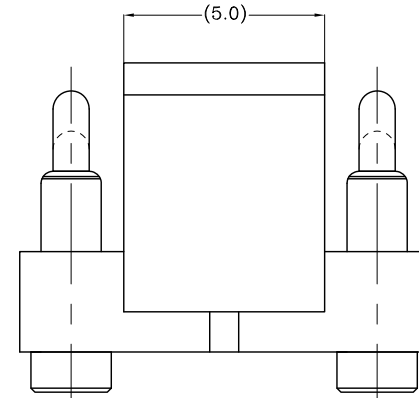
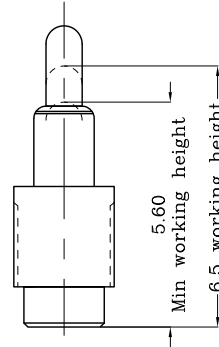
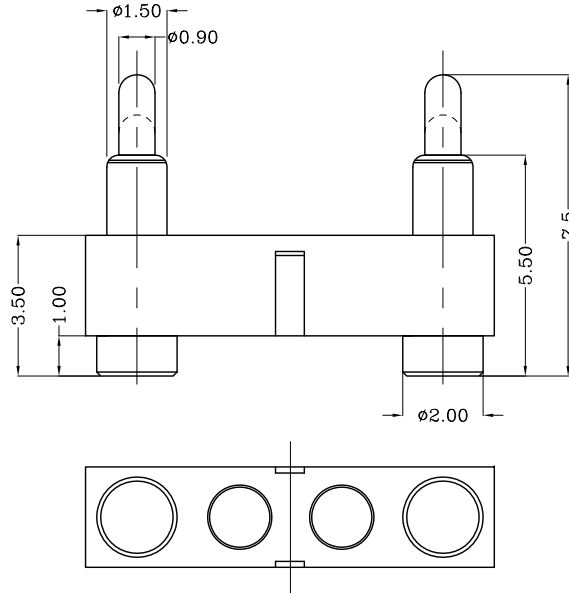
DWN No.:

C-100163

proposal



Recommended PCB Layout



Notes:

- 1 Dimensions shall be interpreted per ASME Y14.5M.
- 2 Mechanical performance(See the table 1)
 - <2.1>The force is the average of forces obtained when plunger goes downwards and upwards.
 - <2.2>Warning: Working height are not permitted to be less than Min working height.
- 3 Electrical performance
 Resistance: 30mOhm Max.
 Current rating: 2.0A
- 4 Packaging specification conforms to EIA 481
- 5 RoHS compliant.

| Table 1 Mechanical performance | | |
|--------------------------------|------------|----------|
| working height | 6.50mm | 80gf min |
| Durability | 10000cycle | |

DIST

| | | |
|------|------------------|------------|
| | Update | 2013/02/21 |
| | NEW | 2007/08/28 |
| Rev. | Revision record. | Date. |

| | | | | | | | | |
|---|--|-------|------------------|-------|------|---------|---------------------------|--|
| Top-Link Electronics Ltd. | | Type | Customer drawing | Unit | mm | Weight | | |
| TOLERANCES UNLESS OTHER SPECIFIED | | DWN: | Cai wanlu | APVD: | | | | |
| 0.0 = ± 0.15 | | CHK: | | REL: | | | | |
| 0.00 = ± 0.10 | | Name | | | | | POGO PIN Customer drawing | |
| 0.000 = ± 0.005 | | Scale | 1:1 | Size | A4 | DWG No. | C-100163 | |
| Angle: ± | | Page | 1/1 | | Rev. | A1 | | |
| SURF TEXTURE: REMOVE BURRS. | | | | | | | | |
| BREAK SHARP EDGES R0.05 MAX.DO NOT SCALE PRINT. | | | | | | | | |

100163-2

PART NUMBER

Top-Link Electronics Ltd.