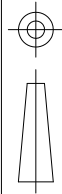
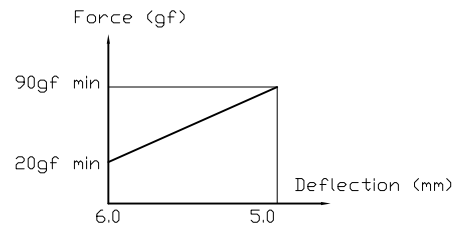
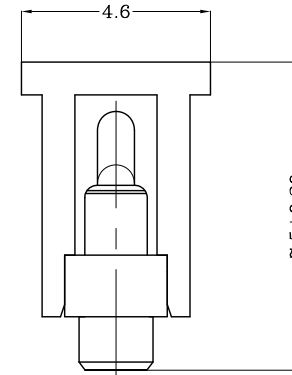
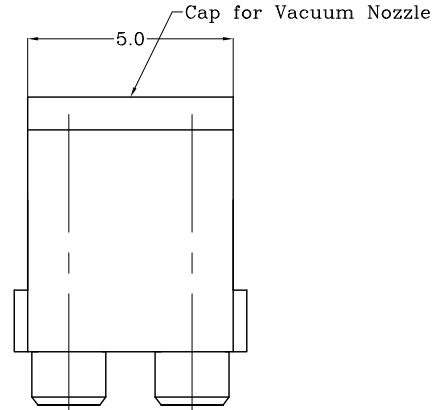
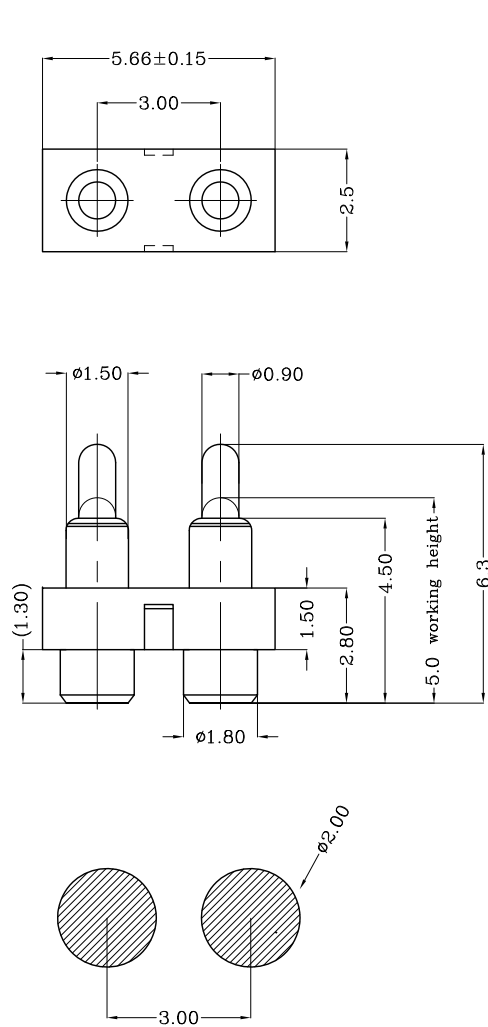


THIS INFORMATION IS CONFIDENTIAL AND IS DISCLOSED TO YOU ON CONDITION THAT NO FURTHER DISCLOSURE IS MADE BY YOU TO OTHER THAN TOP-LINK PERSONNEL WITHOUT WRITTEN AUTHORIZATION FROM TOP-LINK LTD.

DWG NO.
C-100160



USED ON
-



Notes:

- 1 Material, Housing: PA 4.6 (30% Glass Filled)
Color Black.
Contact: Brass
- 2 Mechanical demands:
Plating Plunger: Min 0.4um Au over 1.4um Ni
Plating Body: Min 0.10um Au over 1.4um Ni.

Recommended solder paste thickness is 0.10 mm
Recommended PCB Layout

100160-2

PART NUMBER

DIMENSIONS IN MM
TOLERANCES UNLESS
OTHER SPECIFIED
0 = ±-
0.0 = ±0.15
0.00 = ±0.10
0.000 = ±
ANGLE: ±1°
SURF TEXTURE: 3.2/
REMOVE BURRS. BREAK
SHARP EDGES R0.05 MAX
DO NOT SCALE PRINT

MATL		HT TR	-	FIN	-
DWN	Qin	APVD			
CHK		REL			
NAME BATTERY POGO CONNECTOR 2 POSITIONS PGC-1.5-6.3-R-2P-3.0PH					
SCALE	1:1	A4	DWG NO.	C-100160	SHEET 1 OF 1
					REV C

LDC	-
DIST	-

	update remark		2007/09/24
LTR	REVISION RECORD	APVD	DATE

4

3

2

1

D

C

B

A