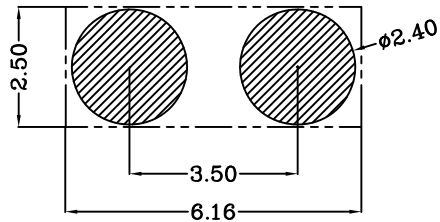
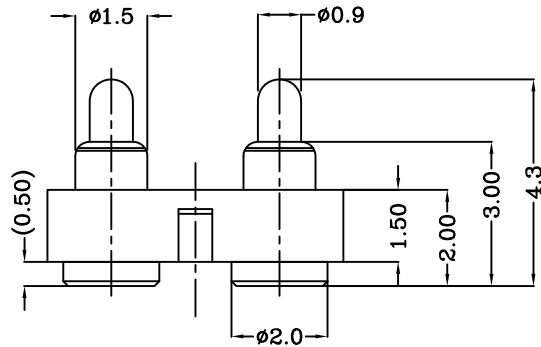
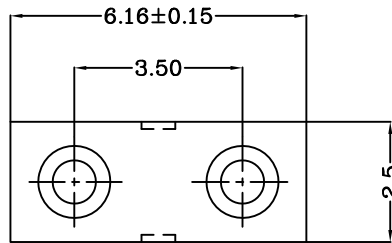


THIS INFORMATION IS CONFIDENTIAL AND IS DISCLOSED TO YOU ON CONDITION THAT NO FURTHER DISCLOSURE IS MADE BY YOU TO OTHER THAN TOP-LINK PERSONNEL WITHOUT WRITTEN AUTHORIZATION FROM TOP-LINK LTD.

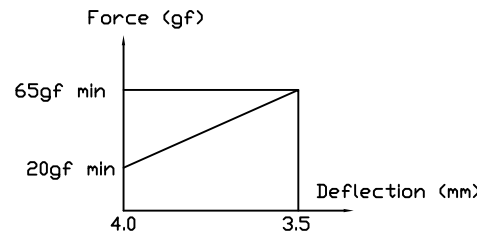
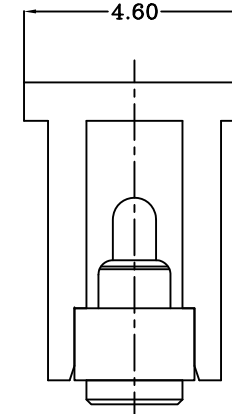
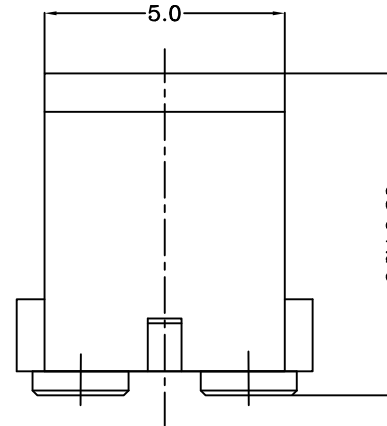
DWG NO.  
C-100158



USED ON  
-



Recommended PCB Layout



- Notes:
- Material, Housing: PA 4.6 (30% Glass Filled)  
Color Black.  
Contact: Brass
  - Mechanical demands:  
Plating Plunger: 0.4um Au over 1.4um Ni  
Plating Body: 0.1um Au over 1.4um Ni.

100158-2

PART NUMBER

DIMENSIONS IN MM  
TOLERANCES UNLESS  
OTHER SPECIFIED  
0 = ±-  
0.0 = ±0.15  
0.00 = ±0.10  
0.000 = ±  
ANGLE: ±1°  
SURF TEXTURE: 3.2/  
REMOVE BURRS. BREAK  
SHARP EDGES R0.05 MAX  
DO NOT SCALE PRINT

MATL	△ 1	HT TR	-	FIN	- ✓
DWN	Benny	APVD		 Top-Link Electronics Ltd.	
CHK		REL			
NAME BATTERY POGO CONNECTOR 2 POSITIONS PGC-1.5-4.3-R-2P-3.5PH					
SCALE	1:1	A4	DWG NO. C-100158	SHEET 1 OF 1	REV B

LDC	-
DIST	-

	update remark		2007/09/07
LTR	REVISION RECORD	APVD	DATE

4

3

2

1

D

C

B

A