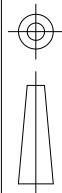
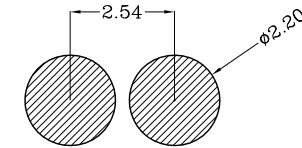
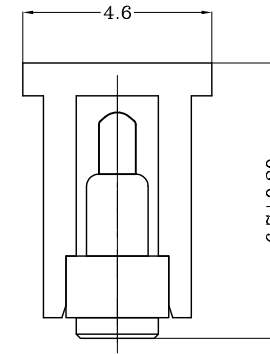
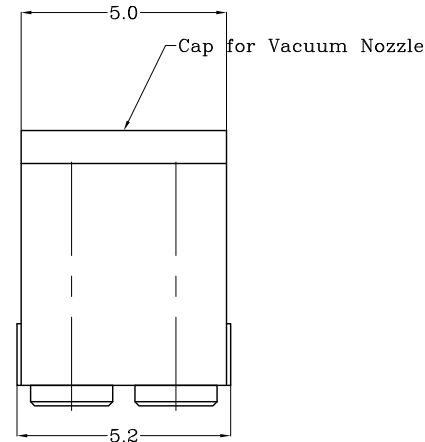
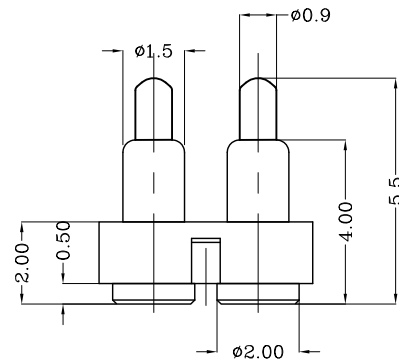
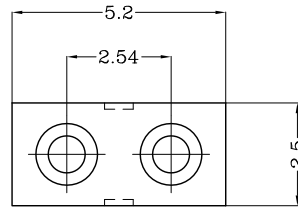


THIS INFORMATION IS CONFIDENTIAL AND IS DISCLOSED TO YOU ON CONDITION THAT NO FURTHER DISCLOSURE IS MADE BY YOU TO OTHER THAN TOP-LINK PERSONNEL WITHOUT WRITTEN AUTHORIZATION FROM TOP-LINK LTD.

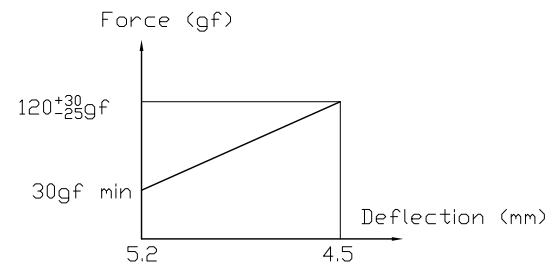
DWG NO.
C-100148



USED ON
—



Recommended Solder paste thickness is 0.10 mm
Recommended PCB Layout



Notes:

- 1) Material(材质):
Housing: PA 4.6 + 30% Glass fiber; UL94 V-0 Color Black.
Contact: Brass
Spring :Stainless steel wire
- 2) Plating:
1)Body: Min 0.1um Gold plating over min. 1.4um Nickel plating
(Body: 镀金0.1um Min 镍底1.4um Min)
2)Plunger: Min 0.4um Gold plating over min. 1.4um Nickel plating
(Plunger: 镀金0.4um Min 镍底1.4um Min)
- 3 Mechanical:
Total stroke(总行程): 1.40mm
Durability(寿命): 10,000 cycle min.
- 4 Electrical(电性能)
Contact resistance(接触抵抗): 30mOhm Max.
Voltage rating(额定电压): 36V DC Max
Current rating(额定电流): 2.0A

100148-2
PART NUMBER

DIMENSIONS IN MM TOLERANCES UNLESS OTHER SPECIFIED		MATL	HT TR	FIN
0 = ±-	0.0 = ±0.15	△	—	— √
0.00 = ±0.10	0.000 = ±	DWN	APVD	
ANGLE: ±1°	SURF TEXTURE: 3.2/▽	CHK	REL	
REMOVE BURRS. BREAK SHARP EDGES R0.05 MAX DO NOT SCALE PRINT	NAME BATTERY POGO CONNECTOR 2 POSITIONS PGC-1.5-5.5-R-2P-2.54PH			
LTR	REVISION RECORD	APVD	DATE	SCALE 1:1
update remark		2011/04/28		A4
				DWG NO. C-100148
				SHEET 1 OF 1
				REV E

LDC	-
DIST	-

4

3

2

1

D
C
B
A