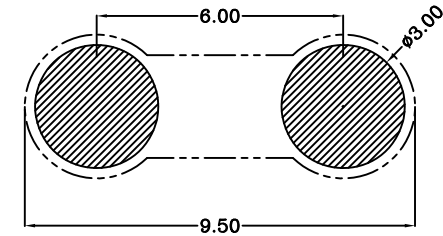
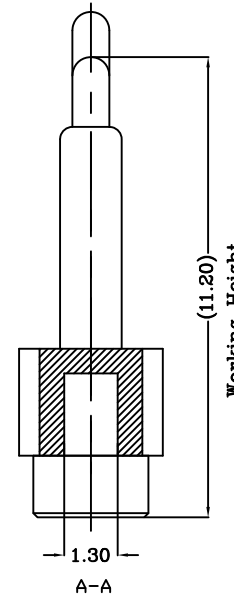
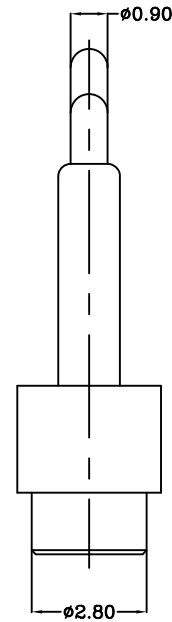
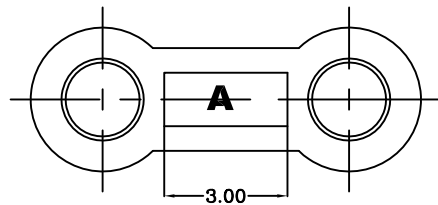
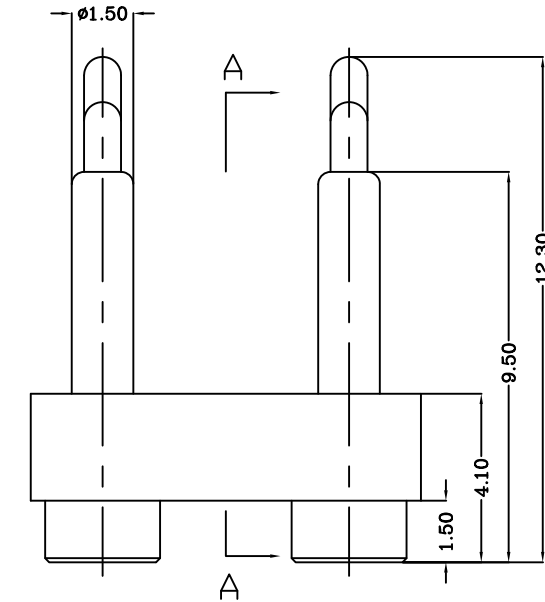
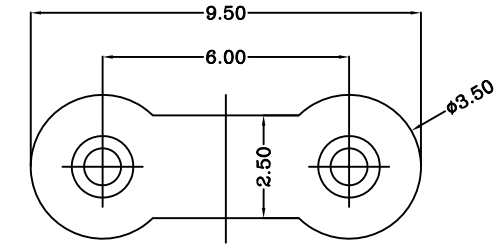


DWG NO.
C-100054



THIS INFORMATION IS CONFIDENTIAL AND IS DISCLOSED TO YOU ON CONDITION THAT NO FURTHER DISCLOSURE IS MADE BY YOU TO OTHER THAN TOP-LINK PERSONNEL WITHOUT WRITTEN AUTHORIZATION FROM TOP-LINK LTD.

LOC	-
DIST	-



Recommended PCB Layout

USED ON
-

Notes:
1 Material, Housing: PA 4.6 (30% Glass Filled)
Color Black.
Contact: Brass
2 Mechanical demands:
Spring force: Min 0.2N with 0.5mm stroke
Min 1.1 with 1.1mm stroke.
Full stroke: 2.5mm
Plating Plunger: 0.4um Au over 1.4um Ni
Plating Body: 0.1um Au over 1.4um Ni.

100054-2
PART NUMBER

DIMENSIONS IN MM
TOLERANCES UNLESS
OTHER SPECIFIED
0 = ±-
0.0 = ±0.10
0.00 = ±-
0.000 = ±-
ANGLE: ±1°
SURF TEXTURE: 3.2/
REMOVE BURRS. BREAK
SHARP EDGES R0.05 MAX
DO NOT SCALE PRINT

MATL		HT TR	-	FIN	-
DWN	Benny	APVD	Lansing	Top-Link Electronics Ltd.	
CHK	Andy	REL			
NAME BATTERY POGO CONNECTOR 2 POSITIONS PGC-1.5-12.3-R-2P-6.0PH					
SCALE	1:1	A4	DWG NO.	C-100054	SHEET 1 OF 1
					REV A

	NEW		2007/09/07
LTR	REVISION RECORD	APVD	DATE

4

3

2

1