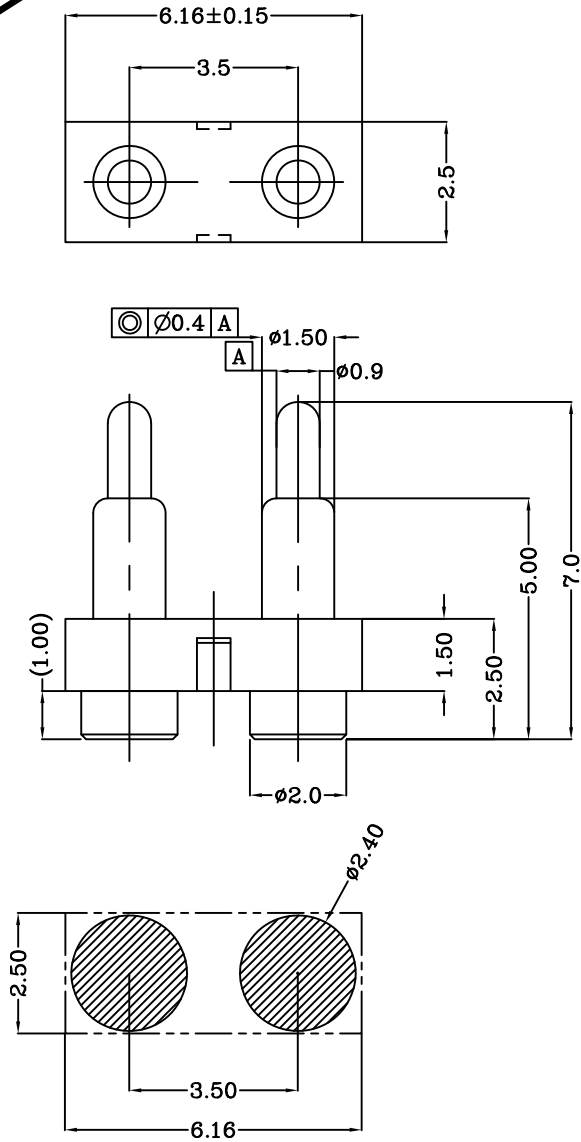


THIS INFORMATION IS CONFIDENTIAL AND IS DISCLOSED TO YOU ON CONDITION THAT NO FURTHER DISCLOSURE IS MADE BY YOU TO OTHER THAN TOP-LINK PERSONNEL WITHOUT WRITTEN AUTHORIZATION FROM TOP-LINK LTD.

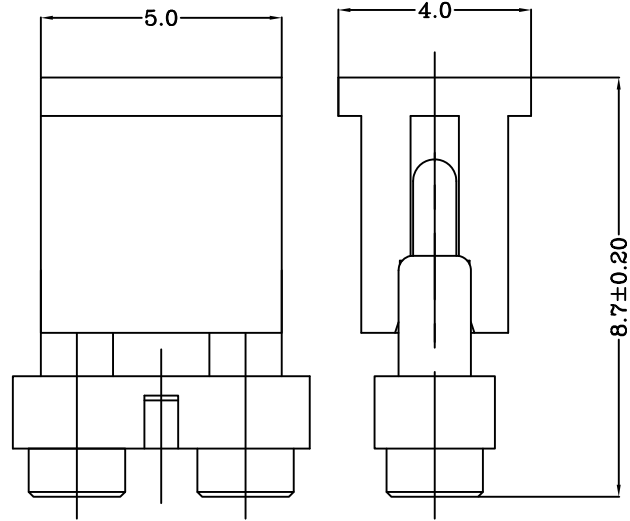
DWN No.: C-100044



proposal



Recommended PCB Layout



- Notes:
- 1 Dimensions shall be interpreted per ASME Y14.5M.
 - 2 Mechanical performance(See the table 1)
 <2.1>The force is the average of forces obtained when plunger goes downwards and upwards.
 <2.2>Warning: Working height are not permitted to be less than Min working height.
 - 3 Electrical performance
 Resistance: 30mOhm Max.
 Current rating: 2.0A
 - 4 Packaging specification conforms to EIA 481
 - 5 RoHS compliant.

| Item | Part name | Q'ty/Ea' | Material | Finish |
|------|-----------|----------|---|----------------------------------|
| 1 | HSG | 1 | High temp.Plastic UL94 V-0 Color Black | _____ |
| 2 | Body | 2 | Leaded Brass | Gold plating over Nickel plating |
| 3 | Plunger | 2 | Leaded Brass | Gold plating over Nickel plating |
| 4 | Spring | 2 | Stainless steel wire | _____ |
| 5 | CAP | 1 | High temp.Plastic UL94 V-0 Color Black | _____ |

| Table 1 Mechanical performance | | |
|--------------------------------|------------|----------------|
| working height | 5.50mm | 157±30gf <2.1> |
| Durability | 10000cycle | |

100044-2

PART NUMBER

| | | | | | | | |
|-----------------------------------|--|-------|------------------|-------|------|--------------------|----------|
| Top-Link Electronics Ltd. | | Type | Customer drawing | Unit | mm | Weight | |
| TOLERANCES UNLESS OTHER SPECIFIED | | DWN: | Qin Zuozhong | APVD: | | | |
| 0. = ± - | | CHK: | | REL: | | | |
| 0.0 = ± 0.15 | | Name | | | | Pogo pin connector | |
| 0.00 = ± 0.10 | | Scale | 1:1 | Size | A4 | DWG No. | C-100044 |
| 0.000 = ± - | | Page | 1/1 | | Rev. | 1 | |
| Angle: ± - | | | | | | | |
| SURF TEXTURE: REMOVE BURRS. | | | | | | | |
| BREAK SHARP EDGES | | | | | | | |
| R0.05 MAX.DO NOT SCALE PRINT. | | | | | | | |

| | | |
|------------------|-----|------------|
| Rev. | NEW | 2007/09/07 |
| Revision record. | | Date. |

DIST
