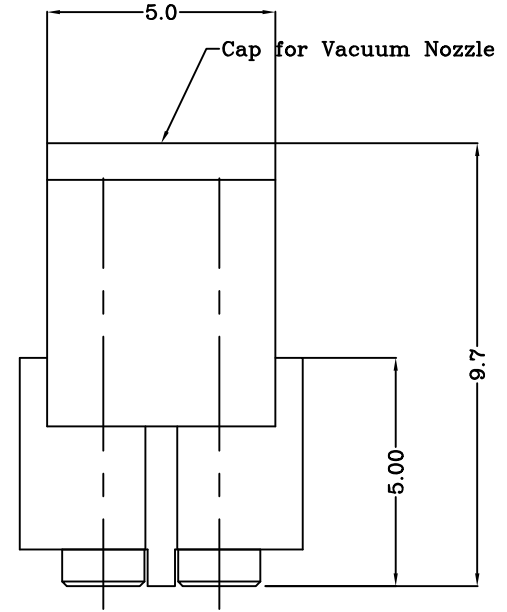
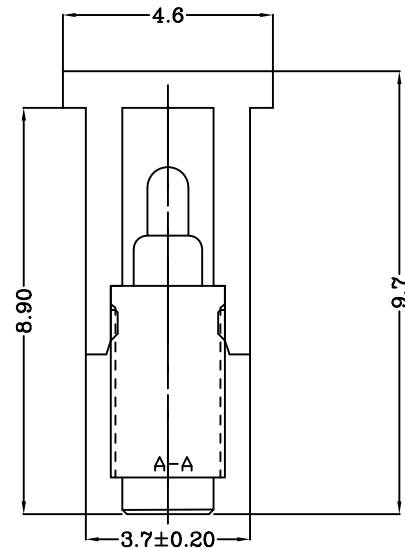
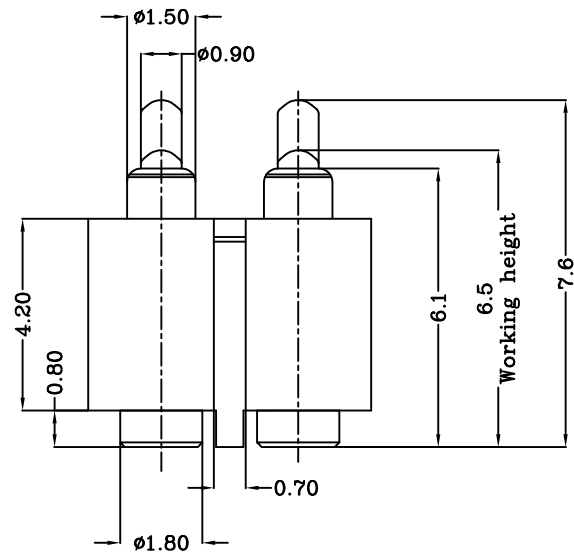
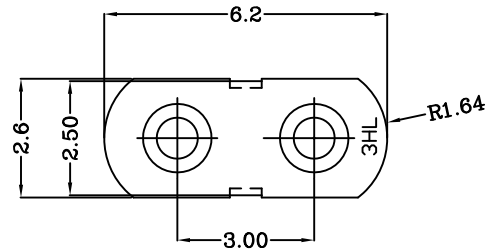


THIS INFORMATION IS CONFIDENTIAL AND IS DISCLOSED TO YOU ON CONDITION THAT NO FURTHER DISCLOSURE IS MADE BY YOU TO OTHER THAN TOP-LINK PERSONNEL WITHOUT WRITTEN AUTHORIZATION FROM TOP-LINK LTD.

DWG NO.
100023-2



LDC	-
DIST	-



- Notes:
- 1 Material: PA 4.6 + 30% Glass fiber; Black (UL94V-0)
 - 2 General draft 1°.
 - 3 Part shall be free from flash,sharp edges,grease,sink mark,weld lines,porosities.
 - 4 Cavity Identification in this area.

USED ON
-

100023-2
PART NUMBER

DIMENSIONS IN MM TOLERANCES UNLESS OTHER SPECIFIED		MATL	HT TR	FIN
0 = ±-		1	-	- ✓
0.0 = ±0.10		DWN	APVD	 Top-Link Electronics Ltd.
0.00 = ±0.10		Benny	Lansing	
0.000 = ±		CHK	REL	
ANGLE: ±1°		Andy		
SURF TEXTURE: 3.2/√		NAME		
REMOVE BURRS. BREAK SHARP EDGES R0.05 MAX DO NOT SCALE PRINT		POGO 2P PGC-1.5-7.6-R-2P-3.0PH		
SCALE	A4	DWG NO.	SHEET	REV
1:1		100023-2	1 OF 1	C

LTR	REVISION RECORD	APVD	DATE
	3.60改为3.70		2007/06/22